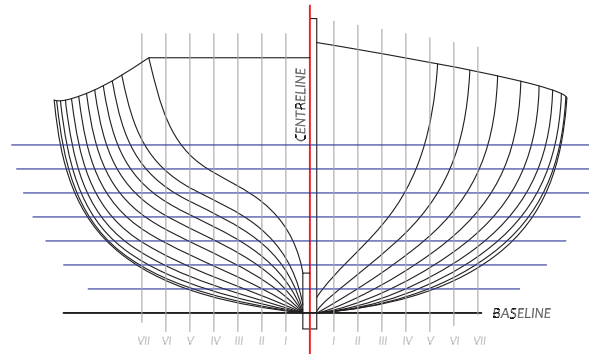




Wooden Boat Museum
of Newfoundland and Labrador

AFTER BODY
FRAMES 10 - 20

FORE BODY
FRAMES 1 - 9



MR. JACK CASEY'S ROW PUNT

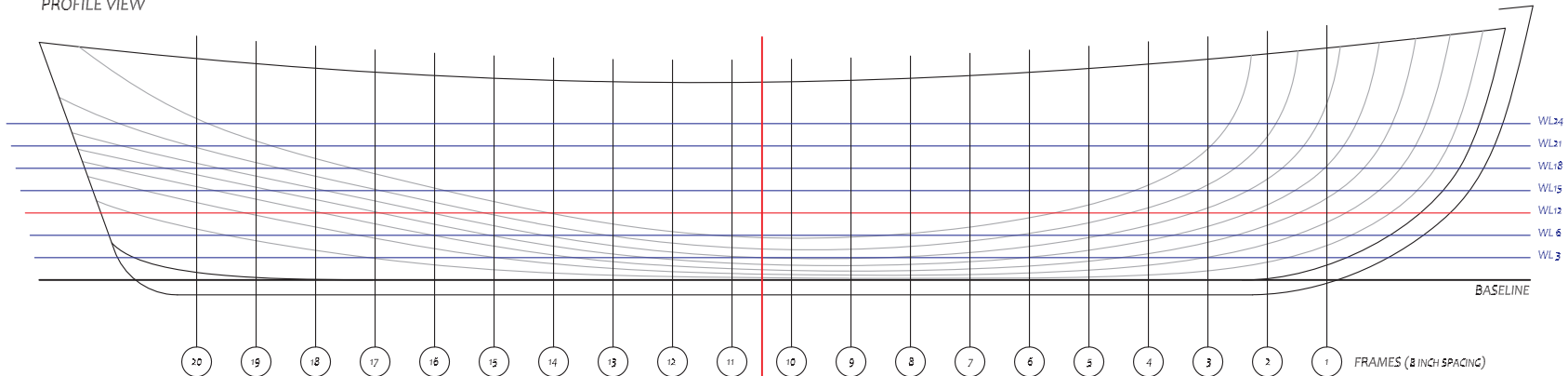
BUILT IN THE YEAR 2009

SCALE: 1/2 INCH = 1 FOOT

LINES LIFTED IN 2012
BY JEROME CANNING

LINES PLAN IS AN INTERPRETATION BASED ON THREE RECORDED SECTIONS:
FORE HOOK, MIDSHIP BEND AND AFTER HOOK
PLUS COUNTER AND STEM CURVES

PROFILE VIEW



PLAN VIEW

