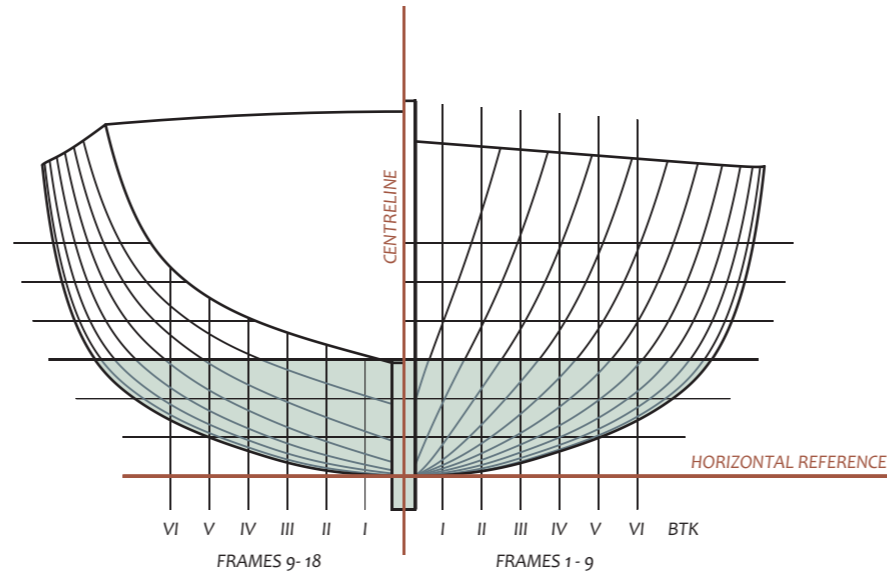


Constructed during the winter of 2012 - 2013 by

STEWART STURGE

"As I was told a rodney is 14 to 16 feet. Once you go over that, 16 to 18 or 19 feet, it would be a punt. A punt is a little bit bigger than a rodney."



Wooden Boat Museum
of Newfoundland and Labrador

Lines lifted in Glovertown
during the summer of 2012

